

Signature Brightening Cream

WICKED SNOW WHITE

for instant tone-up and more



PDRN Regeneration Cream

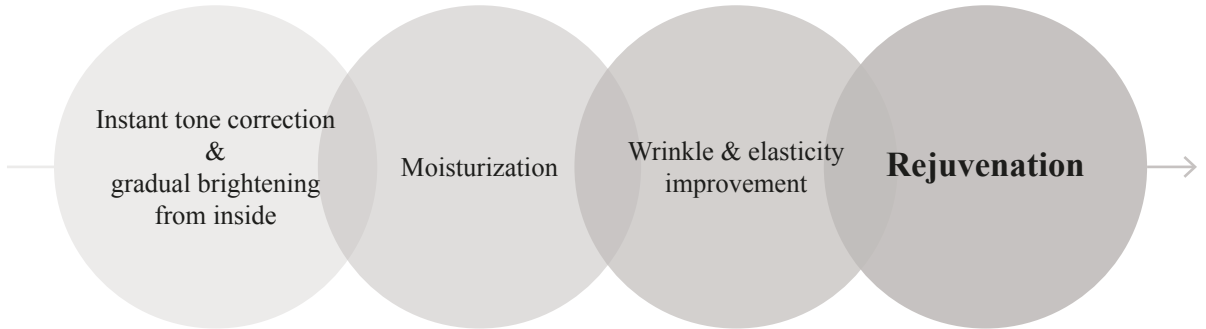
100% extracted from pure salmon DNA



Signature Brightening Cream

WICKED SNOW WHITE

Wicked Snow White (WSW) is a functional regeneration cream containing precious key ingredients, including PDRN, hyaluronic acid and glutathione that reduce skin damage caused by photoaging. Well-balanced ingredients lead your skin to smooth and radiant texture.



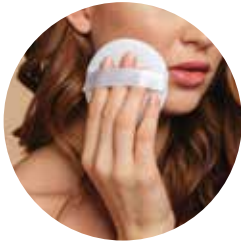
by PDRN · Glutathione · Hyaluronic Acid · Vitamin C · Niacinamide

- Developed by medical doctors in South Korea specializing in aesthetic medicine.
- Instantly brightens your skin to a translucent look while nourishing it from inside.
- Well-balanced synergy of ingredients help return your skin to a healthy condition.
- Can be used as a post-treatment skincare cream after treatments, such as laser, radio frequency, HIFU, etc.





More Than A Daily Tone-Up Cream Recommended to be used as:



Base makeup



Daily skin care



Makeup for
non-formal settings



Homecare treatment to
reduce body pigmentation



Homecare for post-medical
skin treatments*

*By using it daily, WSW helps enhance the effect of medical esthetic treatments such as laser and HIFU.

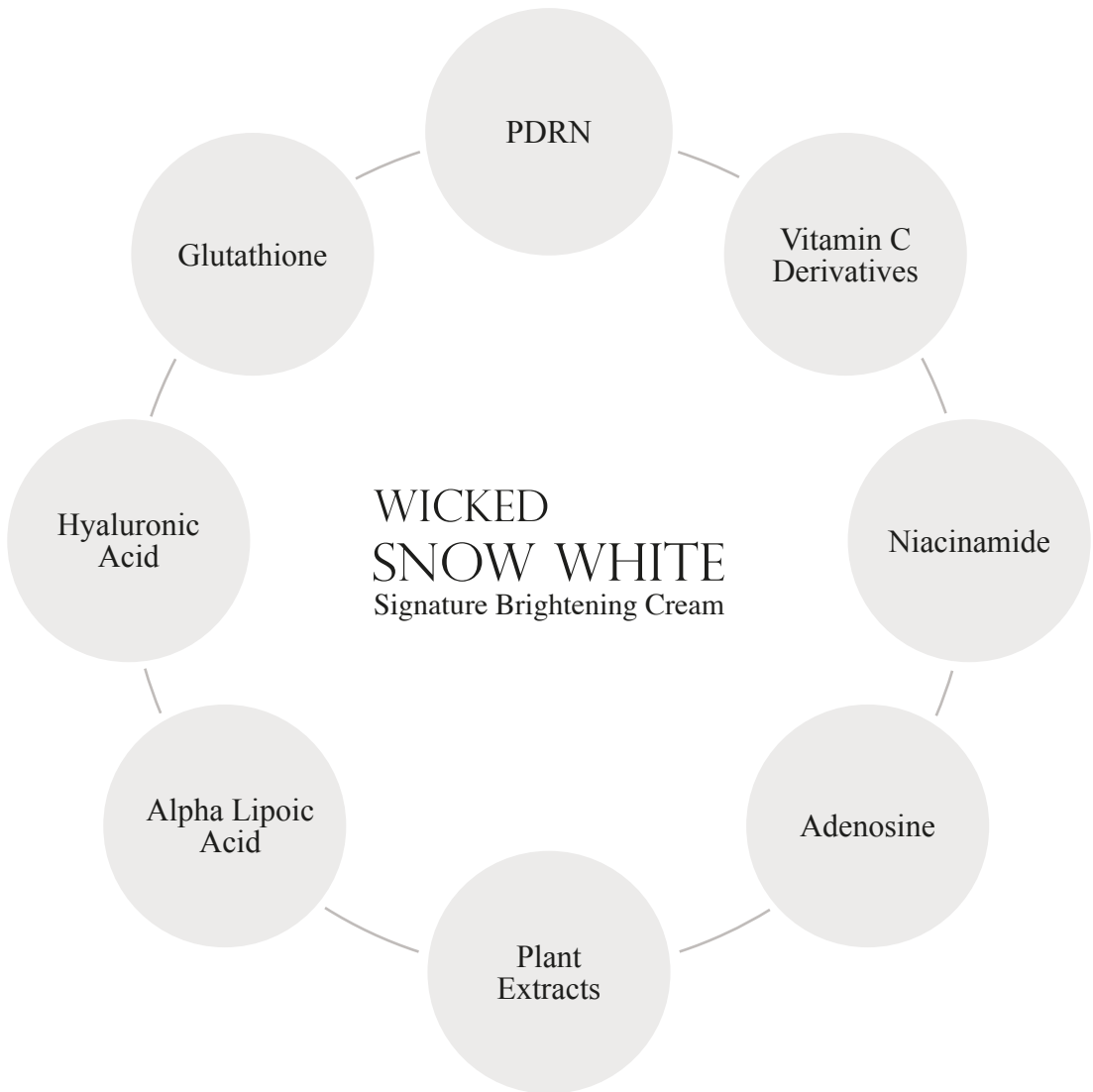


Merits

- ✓ Soft cream gently embraces the skin and very quickly absorbed.
- ✓ Brightens the complexion, effortlessly melting into skin while imparting a dewy glow without a sticky finish.
- ✓ PDRN stimulates skin self-regeneration and collagen synthesis for a younger looking skin.



Balanced Synergy Effects



Multiple Synergy Effect

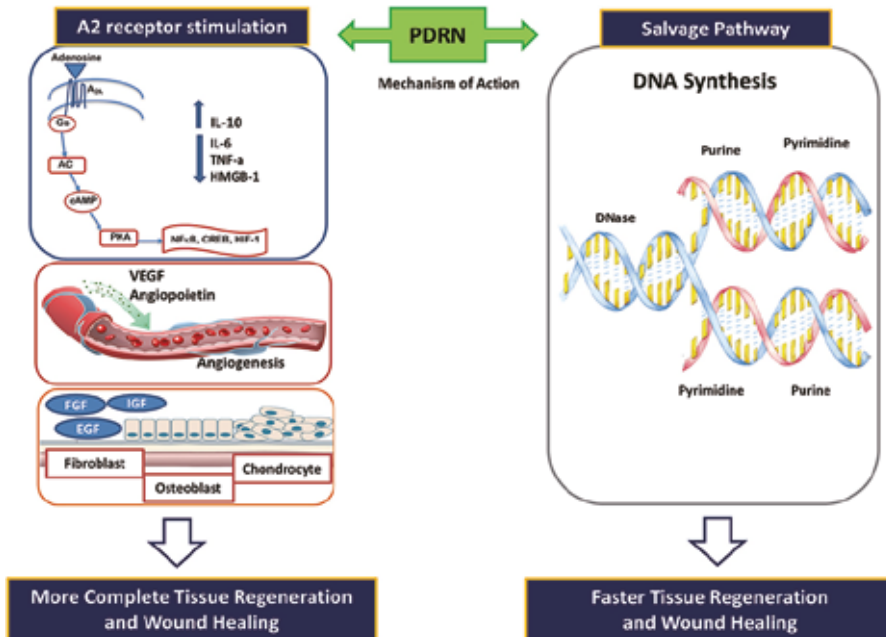
by PDRN • Glutathione • Hyaluronic Acid • Vitamin C • Niacinamide





Key Ingredients

PDRN [PolyDeoxyRiboNucleotide] - Rejuvenation Effect

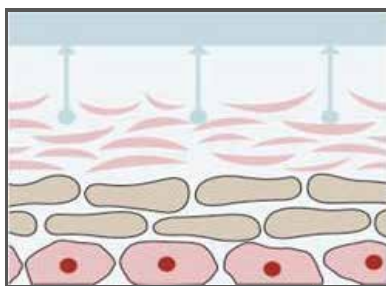


Ref. Squadrito F, Bitto A, Irrera N, Pizzino G, Minutoli L, Altavilla D. Pharmacological Activity and Clinical Use of PDRN. *Frontiers in Pharmacology*.2017;8:224)

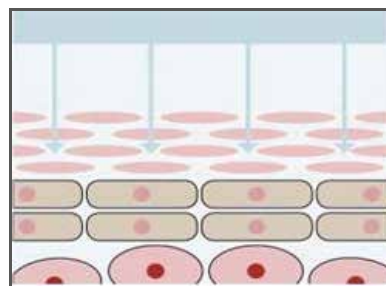
Extracted from salmon DNA, PDRN is a powerful tissue regeneration activator which is used for tissue repair in the medical field and is a key ingredient for repairing and rejuvenating your skin.

HA [Hyaluronic Acid] - Moisturizing Effect

Dry damaged skin



Skin moisturized with HA

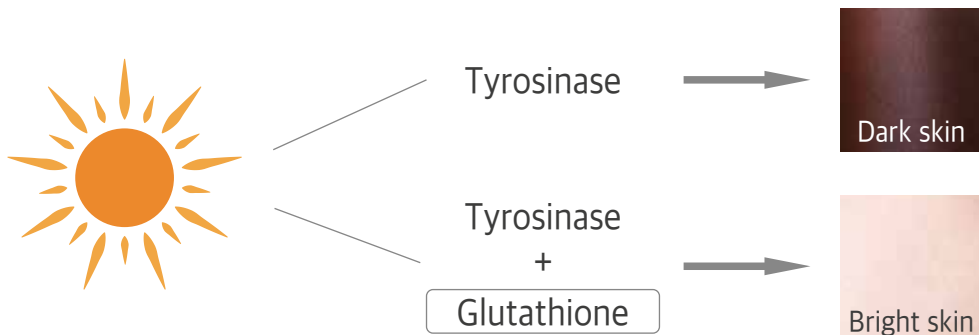


Hyaluronic Acid is a substance that is naturally present in the human body.

Key Ingredients

GSH [Glutathione] - Brightening Effect

Glutathione is one of the most powerful antioxidants naturally generated in the human body and plays a role in strengthening the immune system. It helps keep the skin bright by continuously curbing melanin production through inhibiting Tyrosinase. However, it decreases as one ages.



In addition, WSW also includes Alpha Lipoic Acid and Vitamin C. These two ingredients are highly effective as an antioxidant to improve your skin.

WICKED
SNOW WHITE
Signature Brightening Cream





Key Ingredients



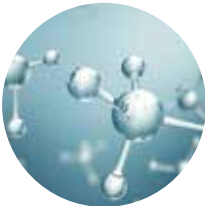
Alpha Lipoic Acid - Antioxidant

- Enhances the benefits of Vitamins C and E.
- Supports moisture retention.
- Reduces fine wrinkles and improves appearance of your skin pores.



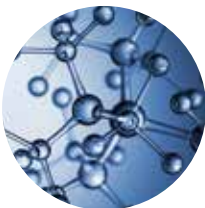
Vitamin C Derivatives - Antioxidant

- Helps fade hyper pigmentation and brighten complexion.
- Fights the signs of photoaging of the skin.
- Increases collagen production.



Niacinamide - Vitamin B3

- Helps build proteins in the skin and lock in moisture.
- Reduces inflammatory skin conditions, such as redness.
- Protects against oxidative stresses, such as sunlight and pollution.



Adenosine - Healing /Anti-aging/Soothing

- Stimulates collagen matrix production.
- Strengthens the protective barrier of the skin.
- Helps to reduce irritation and redness.



Plant Extracts

Polygala Tenuifolia Root, Platycodon Grandiflorum Root, Centella Asiatica, Lycium Chinense Fruit, Rubus Idaeus Fruit, Euterpe Oleracea Fruit, Rubus Fruticosus Fruit, Fragaria Chiloensis Fruit, Morus Nigra Fruit, Vaccinium Myrtillus Fruit, Vaccinium Macrocarpon Fruit, Ribes Nigrum Fruit, Vaccinium Angustifolium Fruit, Tremella Fuciformis





How to Apply



Face wash



Skin toner



Emulsion or Serum



Wicked Snow White^{*}



Sunscreen



Foundation

1. Apply toner lotion and moisturizer after washing your face.
2. Smooth over one or two pumps of WSW on your face and gently massage in a circular motion.
3. Apply sunscreen after using WSW.
4. Press gently with hand to evenly spread foundation on your face.



Notices

- WSW does not have sunscreen effect. Be sure to apply sunscreen when using it in the daytime.
- It is recommended to use WSW in combination with a moisturizer during winter months to avoid excess dryness.
- It is recommended to refrain from using WSW in the daytime due to possible smudging of makeup as a result of the incompatibility between your foundation and WSW. If smudging occurs, use only during nighttime.



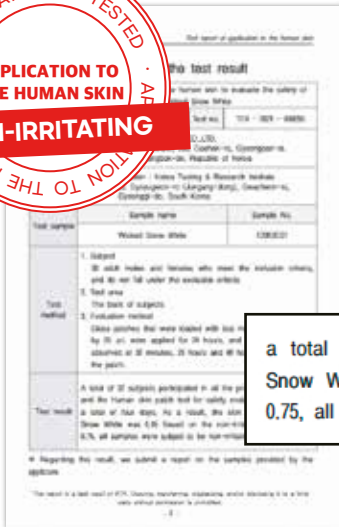


Ensuring Quality

Dermatology Tested

This is a test of application to the human skin to evaluate the safety of Wicked Snow White in a total of 32 subjects.

It was judged that **Wicked Snow White** fell under “the category of non-irritating.”



a total of four days. As a result, the skin reaction of Wicked Snow White was 0.05 Based on the non-irritating criteria of 0.00-0.75, all samples were judged to be non-irritating.

Application to the Human Skin

- Test period : 2021.05.25 - 2021.07.14
- Participant : 32 females
- Test site : KTR(Korea Testing&Research Institute)
- Test results : Non-irritating

Ref. Test Report of Application to the Human Skin by KTR

Type of Conducted Test	Results	Test Report Date	Test Site
Allergy Screening Test	Allergy Free	2021.07.23	KTR
Preservative Effectiveness Test	Criteria A		
Limit Test for Heavy Metals	Not Detected		



A Reliable Manufacturer

Excellent Cosmetic Manufacturing and Quality Control Standards



- cGMP CERTIFICATE -



- ISO 22716 CERTIFICATE -



www.wizmedi.kr



WIZMEDI



[Head Office]

#216, B/D.No.12, 280, Daehak-ro, Gyeongsan-si, Gyeongsangbuk-do, Republic of Korea

[Sales Office]

#704, GS Steel Tower, 21, Singi-ro, Gwangmyeong-si, Gyeonggi-do, Republic of Korea



wizmedisales@wizmedi.kr



+82-53-816-1124